



PhosphoSolutions®
Antibodies that work™

Colorado Biosciences Park
12635 East Montview Boulevard, #213
Aurora, CO 80045-7337
Tel: (888) 442-7100

Anti-GABA_A Receptor, β₁-Subunit

Catalog Number: 860-GB1C

Size: 100 μl

\$310.00

Product Description: Affinity purified rabbit polyclonal antibody

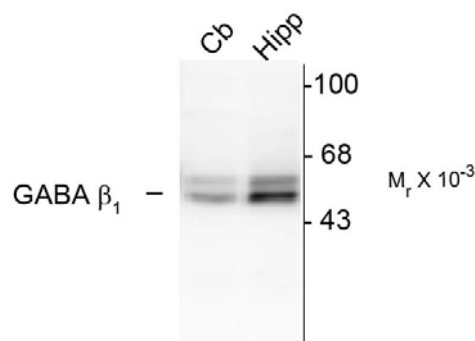
Applications: **WB:** 1:1000

Antigen: Fusion protein from the cytoplasmic loop of the β₁-subunit of rat GABA_A receptor.

Species reactivity: The antibody has been directly tested for reactivity in Western blots with rat tissue. It is anticipated that the antibody will react with bovine, canine, chicken, human, mouse, non-human primate, *Xenopus*, and zebra fish based on the fact that these species have 100% homology with the amino acid sequence used as antigen.

Biological Significance: *Gamma*-aminobutyric acid (GABA) is the primary inhibitory neurotransmitter in the central nervous system, causing a hyperpolarization of the membrane through the opening of a Cl⁻ channel associated with the GABA_A receptor (GABA_A-R) subtype. GABA_A-Rs are important therapeutic targets for a range of sedative, anxiolytic, and hypnotic agents and are implicated in several diseases including epilepsy, anxiety, depression, and substance abuse. The GABA_A-R is a multimeric subunit complex. To date six αs, four βs and four γs, plus alternative splicing variants of some of these subunits, have been identified (Olsen and Tobin, 1990; Whiting et al., 1999; Ogris et al., 2004). Injection in oocytes or mammalian cell lines of cRNA coding for α- and β-subunits results in the expression of functional GABA_A-Rs sensitive to GABA. However, coexpression of a γ-subunit is required for benzodiazepine modulation. The various effects of the benzodiazepines in brain may also be mediated via different α-subunits of the receptor (McKernan et al., 2000; Mehta and Ticku, 1998; Ogris et al., 2004; Pörtl et al., 2003).

Anti-GABA_A-Receptor, β₁-Subunit



Western blot of rat cerebellar (Cb) and hippocampal (Hipp) lysates showing specific immunolabeling of the ~55k β₁-subunit of the GABA_A-R.

Page 1 of 2

WB = Western Blot **IF** = Immunofluorescence **IHC** = Immunohistochemistry **IP** = Immunoprecipitation

Packaging: 100 μl in 10 mM HEPES (pH 7.5), 150 mM NaCl, 100 μg per ml BSA and 50% glycerol. Adequate amount of material to conduct 10-mini Western Blots.

Storage and Stability. For long term storage -20oC is recommended. Stable at -20oC for at least 1 year.

Shipment: Domestic - Blue Ice; International - Blue Ice or Dry Ice.

Purification Method: Prepared from rabbit serum by affinity purification using a column to which the fusion protein immunogen was coupled.

Antibody Specificity: Specific for the ~55k β_1 -subunit of the GABA_A receptor in Western blots.

Quality Control Tests: Western blots performed on each lot.

References:

- Brandon NJ, Jovanovic JN, Colledge M, Kittler JT, Brandon JM, Scott JD, Moss SJ (2003) A kinase anchoring protein 79/150 facilitates the phosphorylation of GABA_A receptors by cAMP-dependent protein kinase via selective interaction with receptor β -subunits. *Mol Cell Neurosci* 22:87-97.
- McKernan RM, et al. (2000) Sedative but not anxiolytic properties of benzodiazepines are mediated by the GABA_A receptor α_1 -subtype. *Nature Neurosci* 3:587-592.
- Mehta AK, Ticku MK (1998) Prevalence of the GABA_A receptor assemblies containing α_1 -subunit in the rat cerebellum and cerebral cortex as determined by immunoprecipitation: Lack of modulation by chronic ethanol administration. *Mol Brain Res* 67:194-199.
- Ogris W, Pörtl A, Hauer B, Ernst M, Oberto A, Wulff P, Höger H, Wisden W, Sieghart W (2004) Affinity of various benzodiazepine site ligands in mice with a point mutation in the GABA_A receptor γ_2 -subunit. *Biochem Pharmacol* 68:1621-1629.
- Olsen RW, Tobin AJ (1990) Molecular biology of GABA_A receptors. *FASEB* 4:1469-1480.
- Pörtl A, Hauer B, Fuchs K, Treitter V, Sieghart W (2003) Subunit composition and quantitative importance of GABA_A receptor subtypes in the cerebellum of mouse and rat. *J Neurochem* 87:1444-1455.
- Whiting PJ, Bonnert TP, McKernan RM, Farrar S, Le Bourdellès B, Heavens RP, Smith DW, Hewson L, Rigby MR, Sirinathsinghji DJS, Thompson SA, Wafford KA (1999) Molecular and functional diversity of the expanding GABA_A receptor gene family. *Ann NY Acad Sci* 868:645-653.

WB = Western Blot **IF** = Immunofluorescence **IHC** = Immunohistochemistry **IP** = Immunoprecipitation

Packaging: 100 μ l in 10 mM HEPES (pH 7.5), 150 mM NaCl, 100 μ g per ml BSA and 50% glycerol. Adequate amount of material to conduct 10-mini Western Blots.

Storage and Stability. For long term storage -20oC is recommended. Stable at -20oC for at least 1 year.

Shipment: Domestic - Blue Ice; International – Blue Ice or Dry Ice.