



PhosphoSolutions®
Antibodies that work™

Colorado Biosciences Park
12635 East Montview Boulevard, #213
Aurora, CO 80045-7337
Tel: (888) 442-7100

Anti-Phospho-Ser⁹²³ GABA_B R1

Catalog Number: p1148-923

Size: 100 µl

\$310.00

Product Description: Affinity purified rabbit polyclonal antibody

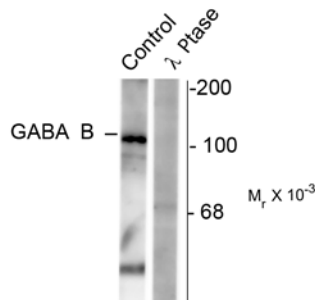
Applications: WB: 1:1000

Antigen: Phosphopeptide corresponding to amino acid residues surrounding the phospho-Ser⁹²³ of GABA_B R1.

Species reactivity: The antibody has been directly tested for reactivity in Western blots with rat tissue. It is anticipated that the antibody will react with bovine, human, mouse and non-human primate tissues based on the fact that these species have 100% homology with the amino acid sequence used as antigen.

Biological Significance: Gamma-aminobutyric acid (GABA) is the primary inhibitory neurotransmitter in the central nervous system. There are two major classes of GABA receptors: the GABA_A and the GABA_B subtype of receptors. GABA_B receptors are heterodimeric G protein-coupled receptors that mediate slow synaptic inhibition in the central nervous system. Phosphorylation enhances GABA_B receptor effector coupling (Couve et al., 2004). Phosphorylation of Ser⁹²³ is thought to be important in the regulation of GABA_B receptor function.

Anti-Phospho-Ser⁹²³ GABA_B R1



Western blot of rat synaptic membrane showing specific immunolabeling of the ~102k GABA_B R1 protein phosphorylated at Ser⁹²³ (control). The phosphospecificity of this labeling is shown in the second lane (*lambda*-phosphatase: λ-Ptase). The blot is identical to the control except that it was incubated in λ-Ptase (1200 units for 30 min) before being exposed to the phospho-Ser⁹²³ GABA_B antibody. The immunolabeling is completely eliminated by treatment with λ-Ptase.

WB = Western Blot **IF** = Immunofluorescence **IHC** = Immunohistochemistry **IP** = Immunoprecipitation

Packaging: 100 µl in 10 mM HEPES (pH 7.5), 150 mM NaCl, 100 µg per ml BSA and 50% glycerol. Adequate amount of material to conduct 10-mini Western Blots.

Storage and Stability: Store at -20°C; stable for at least one year.

Shipment: Domestic - Blue Ice; International - Blue Ice or Dry Ice.

Purification Method: Prepared from rabbit serum by affinity purification via sequential chromatography on phospho- and dephospho-peptide affinity columns.

Antibody Specificity: Specific for ~102k GABA_B R1 phosphorylated at Ser⁹²³. Immunolabeling of the GABA_B R1 band is completely blocked by λ-phosphatase treatment.

Quality Control Tests: Western blots performed on each lot.

References:

Couve A, Calver AR, Fairfax B, Moss SJ, Pangalos MN (2004) Unravelling the unusual signaling properties of the GABA(B) receptor. *Biochem. Pharmacol.* Oct 12;68(8):1527-36.

WB = Western Blot **IF** = Immunofluorescence **IHC** = Immunohistochemistry **IP** = Immunoprecipitation

Packaging: 100 µl in 10 mM HEPES (pH 7.5), 150 mM NaCl, 100 µg per ml BSA and 50% glycerol. Adequate amount of material to conduct 10-mini Western Blots.

Storage and Stability: Store at -20°C; stable for at least one year.

Shipment: Domestic - Blue Ice; International - Blue Ice or Dry Ice.